

M28840/22 Metal Conduit Bushing



Conduit &
Accessories

M28840/22-S 10

Basic Part No. _____ Dash No. (See Table I)

Material Designator _____
S = Corrosion Resistant Steel
Passivate per QQ-P-35

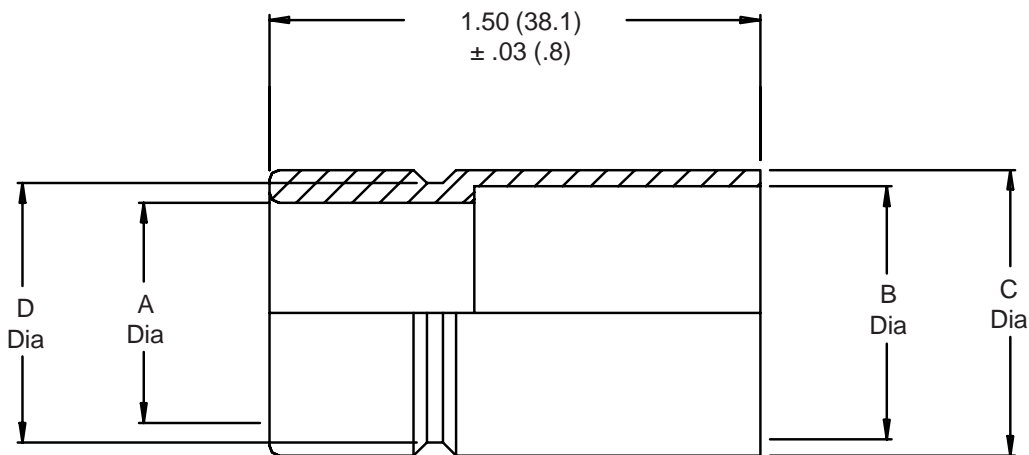


TABLE I

M28840/4		A Dia		B Dia		C Dia		D	
Size	Ref.	+0.020 -0.000	(.5) (.0)	+0.005 -0.000	(.12) (.0)	+0.000 -0.005	(.0) (.12)	+0.000 -0.005	(.0) (.12)
03	03	.375	(9.5)	.540	(13.7)	.625	(15.9)	.525	(13.3)
04	04	.500	(12.7)	.665	(16.9)	.750	(19.1)	.650	(16.5)
05	05	.625	(15.9)	.780	(19.8)	.875	(22.2)	.775	(19.7)
06	06	.750	(19.1)	.940	(23.9)	1.000	(25.4)	.900	(22.9)
08	08	1.000	(25.4)	1.225	(31.1)	1.375	(34.9)	1.275	(32.4)
10	10	1.250	(31.8)	1.470	(37.3)	1.625	(41.3)	1.525	(38.7)
12	12	1.500	(38.1)	1.740	(44.2)	1.875	(47.6)	1.775	(45.1)
16	16	2.000	(50.8)	2.215	(56.3)	2.375	(60.3)	2.275	(57.8)

1. For complete dimensions see applicable Military Specification.
2. Metric dimensions (mm) are indicated in parentheses.